

## Office Locations

- King of Prussia, PA
- Washington, PA
- Bridgeport, NJ

24 Hour # 800-725-0593

Web Site: [www.rtenv.com](http://www.rtenv.com)

Email: [rtenv@aol.com](mailto:rtenv@aol.com)

## PROJECT PROFILE

### Philadelphia Pier Site

At Piers 66-69 on the Philadelphia Waterfront, RT completed a series of remedial tasks so as to facilitate sale of a property with more than a century of heavy industrial use. Activities included:

- Phase 2 Investigation Work
- Removal of nine underground storage tanks (USTs)
- Delineation of oil release migration from offsite
- Bioremediation of groundwater from a mineral spirits tank release
- Remediation by excavation and removal of lead impacted soils from painting operations
- Groundwater monitoring to confirm cleanup adequacy
- Historical fill (coal ash) extent determination and leaching analysis to confirm underlying soils were not significantly impacted.

The overall project spanned six months and was successfully completed. The property was sold at auction to help settle bankruptcy of the selling owner.

### Former Navy Bases

RT was retained by the Government of Bermuda, Ministry of the Environment, to complete work involving the investigation of 140 current and former tanks and miles of petroleum pipelines at two Navy Bases slated for closure in Bermuda. RT mobilized GEOPROBE rigs to the island and completed the work using field test kits and a portable gas chromatograph, backed by lab analysis of selected samples. Two landfills were also studied, and remedial recommendations were made. The Government of Bermuda required that all work be completed within a nine week time frame, prior to the termination of the lease, which covered an estimated one tenth of Bermuda's land area. Where releases were found, further investigation work to quantify the horizontal and vertical extent was concurrently completed, with required information submitted to the Ministry of the Environment within the schedule time frame.

### Vineland Training School

At this South Jersey facility, RT completed work involving the removal of more than 20 tanks, due to conversion of the buildings at the facility to natural gas. The buildings had been supplied by individual oil tanks. Work was overseen by RT's licensed tank inspection personnel, with all contaminated soils and sludges appropriately managed. "Due Diligence" information on disposal facilities was also submitted. One tank, to remain for emergency generator service, was upgraded and certified for continued use by RT's Professional Engineer assigned to the project.



**Corporate Office**

215 W. Church Road  
King of Prussia, PA 19406  
Tel: (610) 265-1510  
Fax: (610) 265-0687

**SW Pennsylvania**

591 E. Maiden Street  
Washington, PA 15301  
Tel: (724) 206-0348  
Fax: (724) 206-0380

**New Jersey Office**

Pureland Complex, Suite 306  
510 Heron Dr., PO Box 521  
Bridgeport, NJ 08014  
Tel: (856) 467-2276  
Fax: (856) 467-3476

**IS MY TANK "REGULATED"?**  
**FACT SHEET**  
*NJ & PA Regulations*

There is a great deal of confusion about "regulated" and "unregulated" underground storage tanks. New Jersey and Pennsylvania have different regulations as to what are and are not regulated USTs. Starting in the late 1980's both states began to regulate USTs. Tanks which continued to be used, or which were not **completely emptied** by then may be regulated, depending on their category.

**Here is What You Need to Know**

Tanks are considered Areas of Concern by nearly all environmental consultants and tanks of any age or type need to be investigated to see if there are releases from the tank, pipes, or, due to overfilling.

If a tank has had a release, the state environmental agency must be promptly notified. The extent of the release then needs to be determined to see if "remedial action" or "monitor only" is necessary. Monitoring may involve soil and/or groundwater.

Call us at 800-214-5612 in New Jersey or 800-725-0593 in Pennsylvania if you need help determining the status of your tank!

**New Jersey:**

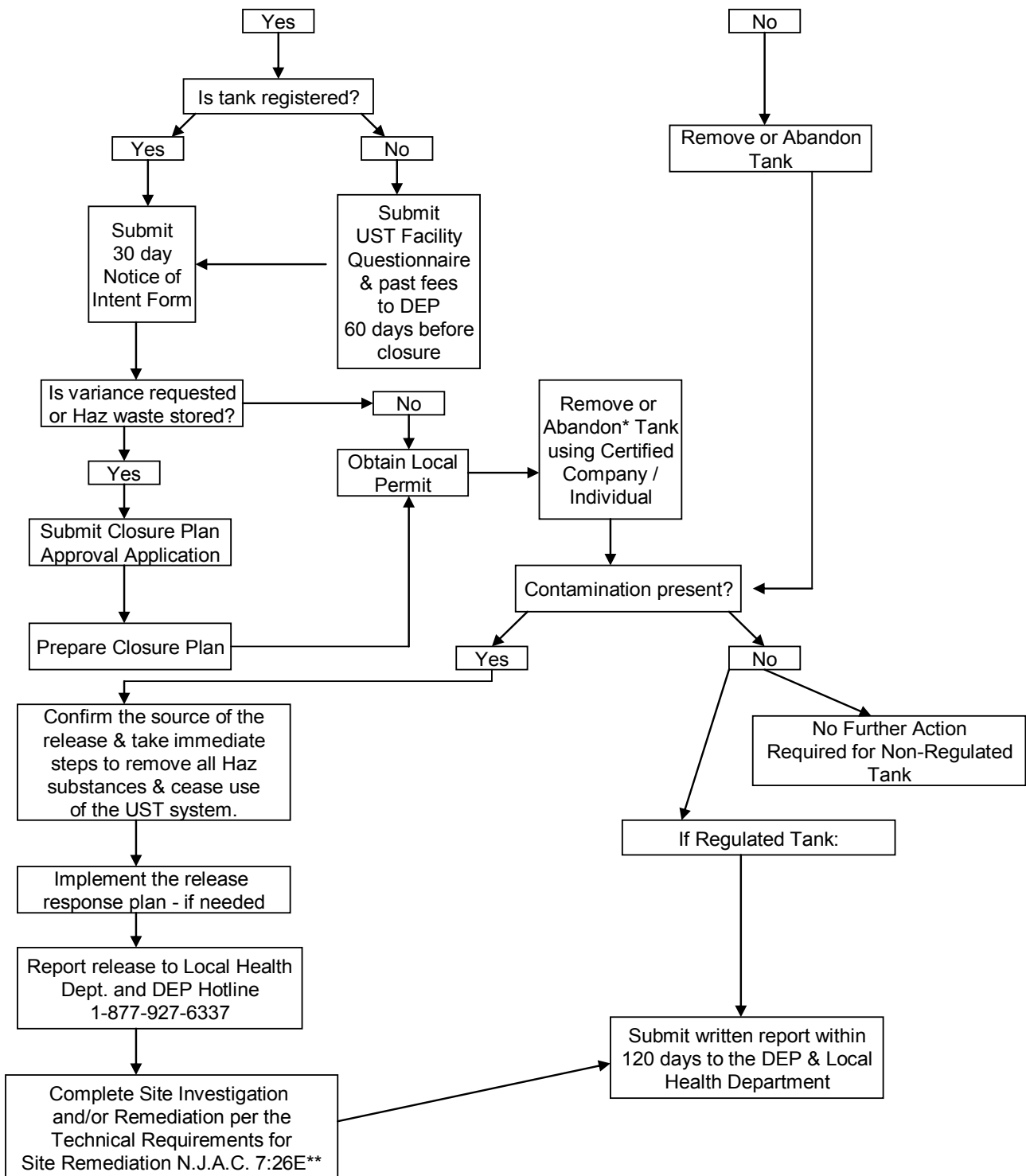
**SUMMARY OF NJDEP UNDERGROUND STORAGE TANKS  
REGULATED UNDER  
P.L. 1986 SUBCHAPTER 102 (C. 58:10A-21 et seq.)**

Material Stored	Type of Facility	Quantity Stored
Heating Oil	Commercial Sales, Distribution & Processing (fuel oil dealers)	Any amount
Heating Oil (1)	Non-residential on-site consumptive use (business, industry municipal, etc.)	More than 2,000 gallons (2)
Motor fuel (gasoline, diesel, etc.)	Non-commercial farm or Residential	More than 1,100 gallons (2)
Motor fuel	All others	Any amount
All other hazardous chemicals & wastes (3)	All	Any amount

- a. Residential heating oil for on-site consumption is exempt (any amount)
- a. All gallonage totals are aggregate for the category of substance at the specific site (owners or Operators of farm tanks should contact the DEP for special aggregate provision). All gallonage figures are manufacturer's nominal capacity ONLY.
- a. A list of regulated hazardous chemical and wastes is available from the DEP.

# REGULATED TANK? – New Jersey

(See previous page for Guidelines)



\*Abandonment in-place cannot be performed if the tank is accessible and contamination is detected. If the tank is inaccessible and contamination is detected, a P.E. Certification must be submitted stating why the tank cannot be removed.

\*\*Must be completed by Certified Subsurface Evaluator or Professional Engineer



**Corporate Office**

215 W. Church Road  
King of Prussia, PA 19406  
Tel: (610) 265-1510  
Fax: (610) 265-0687

**SW Pennsylvania**

591 E. Maiden Street  
Washington, PA 15301  
Tel: (724) 206-0348  
Fax: (724) 206-0380

**New Jersey Office**

Pureland Complex, Suite 306  
510 Heron Dr., PO Box 521  
Bridgeport, NJ 08014  
Tel: (856) 467-2276  
Fax: (856) 467-3476

**IS MY TANK "REGULATED"?**  
**FACT SHEET**  
*NJ & PA Regulations*

**PENNSYLVANIA TANK SUMMARY**

**Regulated Tanks** - Tanks which contain regulated substances, with a capacity of more than 110 gallons, where 10% or more of the volume is below the surface of the ground.

**Unregulated Tank** -

- Tank Capacity <110 gal.
- Farm or Residential Tanks with a Capacity of 1,100 gal., or less which store motor fuel non commercial purposes.
- Tanks which Store Heating Oil or Kerosene used on the premises where stored
- Pipeline Facilities.
- Surface Impoundments, pits, ponds or lagoons.
- Stormwater or Wastewater Collections Systems.
- Septic Tanks
- Tanks which Store Asphalt, Propane, Water, Sand, Animal Wastes, Refrigerant Condensing Material, Gaseous Substances used in the Administration of Medical and any other Unregulated Substance.
- Tanks which Store any substance defined as Hazardous Waste under Subtitle C of RCRA.
- Sump Tanks which are used as Temporary Storage for Emergency Spill or Overflow Containment and are Immediately emptied after use.
- Liquid Traps or Associated gathering lines directly related to oil or gas production or gathering operations.
- Sump Tanks which are used as Temporary Storage for Emergency Spill or Overflow Containment and are Immediately emptied after use.
- Tanks which have been out of Operation and Empty Since December 22, 1988.
- Liquid Traps or Associated gathering lines directly related to oil or gas production or gathering operations.
- Tanks Situated in and Underground Areas (example - in basements or mines).
- Tanks Regulated under the Solid Waste Management Act of 1980.

# REGULATED TANK? Pennsylvania

(See previous page for Guidelines)

